



WEST COLUMBIA GORGE

CHAMBER OF COMMERCE



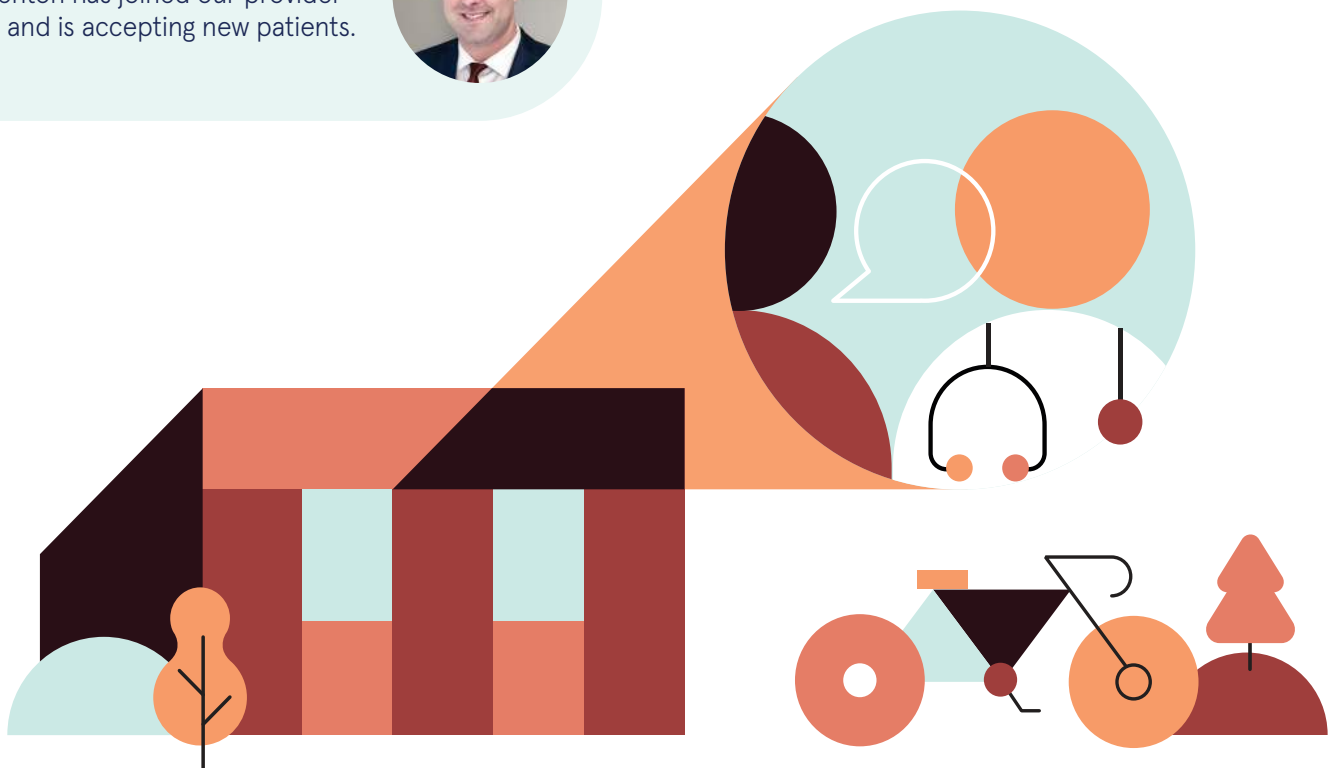
You deserve a primary care provider who knows you. By name.

Who's taking care of you? You have a lot to juggle every day. Your health is just one more thing on the list. You deserve a team dedicated to keeping your health on track every day — especially when you're busy. That's where Adventist Health's primary care providers come in. We care about your whole life, not just today's injury or illness. In our Gresham-Troutdale clinic or any of our clinics, get the care you need quickly.

**Add Adventist Health Primary Care Gresham-Troutdale to your team:
503-261-6929**

Introducing Dr. Jonathan Benton

Dr. Benton has joined our provider team and is accepting new patients.



VISIT: [ADVENTISTHEALTH.ORG/PORTLAND/PRIMARYCARE](https://www.adventisthealth.org/portland/primarycare)

OUR NATURE WILL MOVE YOU



We are grounded in community. We preserve and enhance our historic downtown. We embrace our natural setting. We envision a future that honors our past. We cherish our role as the Gateway to the Gorge. But we are more place than passage. We are a place for families, a place of friendships, a place of gatherings, a place of creativity, and a place we are proud to call home.

We invite you to experience our place, feel the warmth of our people and the power of our surroundings.

WE ARE TROUTDALE, OREGON.

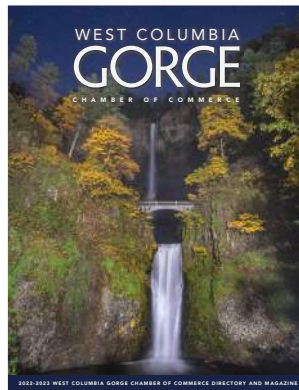


FOLLOW US ON SOCIAL MEDIA @EXPLORETROUTDALE
WWW.EXPLORETROUTDALE.COM

Contents

Photo Courtesy of Clifford Paguio Photography

- 4 Welcome to West Columbia Gorge
- 5 Get involved with the Chamber
- 6 Cities of the Gorge
- 8 Arts & Culture in the Gorge
- 10 Events of the West Columbia Gorge
- 12 Explore
- 14 Columbia River Gorge Scenic Area Map
- 16 Education
- 18 Business & Industry
- 19 Business Listings



ABOUT THE COVER:

Special thanks to Clifford Paguio for use of this year's cover photo. Known for capturing stunning images around the Pacific Northwest, Mr. Paguio's work can be found at www.cliffordpaguio.com



PRODUCER:

West Columbia Gorge Chamber of Commerce
P.O. Box 245
Troutdale, OR. 97060
Phone: (503) 669-7473
email: info@westcolumbiagorge.com
www.westcolumbiagorgechamber.com

PUBLISHER:

Pamplin Media Group /
Contract Publishing Division
6605 SE Lake Rd.
Portland, OR 97222
Phone: 503-684-0360
pamplinmediapublishing.com

Pamplin Media Group

PROJECT MANAGEMENT + SALES:

Mary Closson

ART DIRECTION + GRAPHIC DESIGN:

Matias Ricco

DATA PROCESSING:

Don Atwell

MARKETING + AD COORDINATOR:

Sarah LaMarche

PHOTOGRAPHY:

The Chamber would like to thank those individuals and organizations who submitted photos for this year's magazine. Your contributions have been instrumental in helping us promote business, education and tourism throughout the region. Additional photos courtesy of Dreamstime.com.

Explore

WOOD VILLAGE



THE IDEAL **BASE CAMP**
stay • eat • play

EVERYTHING YOU NEED IN
1 SQUARE MILE

FOLLOW US @WOODVILLAGEOR



#WOODVILLAGEOR



COFFEE • RESTAURANTS
LODGING • SHOPPING • SERVICES
TOWN CENTER • PARKS

Welcome

Thanks for picking up this copy of the West Columbia Gorge Chamber of Commerce Directory and Magazine.

The West Columbia Gorge Chamber proudly serves the communities of Fairview, Wood Village, Troutdale and Cascade Locks, as well as several townships surrounding these cities. We work diligently to connect commerce with the surrounding communities to create economic vitality throughout the region. We also serve as the DMO (destination marketing organization) for the area. Our efforts are focused on promoting all area businesses, with a special emphasis on stimulating our tourism economy.

Our Chamber is committed to supporting the region's economic vitality through promoting events, sharing information, and providing exposure that nurtures and sustains local businesses. Our increased digital footprint via our website, e-newsletter and Facebook has resulted in steady membership growth for our organization.

Joining the chamber is easy and it can greatly benefit your business by expanding your message to those who live, work, or visit the west end of the Columbia River Gorge.

For more information, please contact us:
info@westcolumbiagorgechamber.com or 503-669-7473

We look forward to hearing from you!





Get Involved

The West Columbia Gorge Chamber of Commerce offers an array of opportunities. Take advantage of our numerous networking events where you will have the opportunity to meet more chamber members and promote your business.

Get connected with your community by getting involved and volunteer at one of our local events or festivals. Better yet, join a committee or host one of our many networking events held through out the year. Get involved, you'll be glad you did!

Membership Benefits:

- Listing in the Chamber's Membership Directory including links to your company's website
- Listing in West Columbia Gorge Chamber of Commerce Business Directory and Magazine
- Networking Opportunities
- Free Booth at Spring and Fall Marketplace Trade Show
- Advertising Opportunities
- Use of Chamber logo on marketing materials
- Volunteer and service opportunities for business and employees
- Referral benefits for Chamber Bucks



Cities of the Gorge

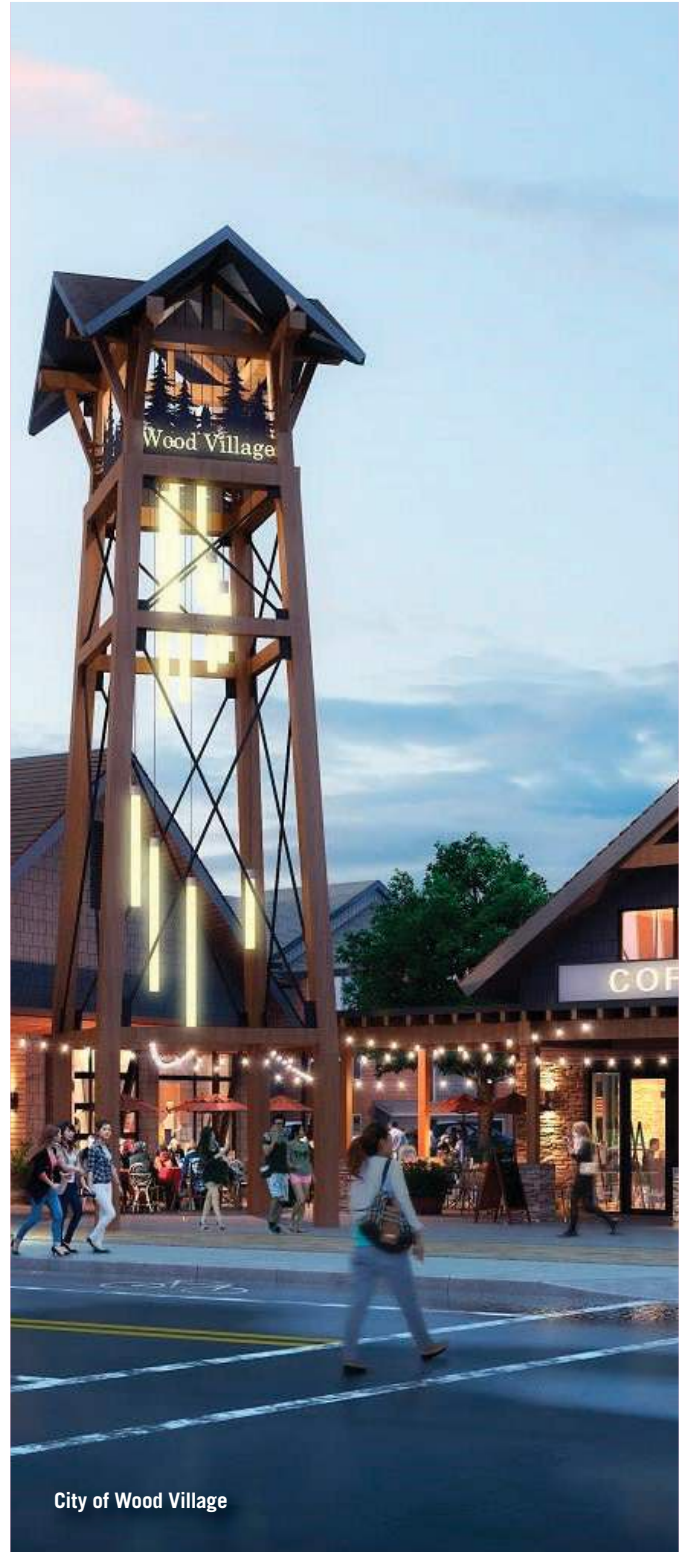
The West Columbia River Gorge is a place which is thriving in nature, business and community. The Halsey Corridor offers a smooth transition from our cities of Fairview, Wood Village and Troutdale. The nearby I-84 grants easy access to all of our areas including Cascade Locks, as well as our unincorporated communities of Springdale, Corbett and Bridal Veil. Whether you are looking for a place to work, hike, shop or play, it can all be found in the West Columbia Gorge.

City of Wood Village

Wood Village continues to be a city of tremendous growth. The Byway, which is a large mixed-use development with 174 housing units and over 10,000 square feet of commercial space is nearly completed. There is also another smaller mixed-use project planned for Halsey as well. The new City Hall and Civic Center will be opened in late July. This new facility will not only serve as the headquarters for the city, but as a meeting and gathering place as well. The new facility has a large plaza, splash pad, and will have facilities for private events. There has also been a lot of activity at our town center with some new and exciting restaurants coming soon!

We're not just adding new buildings, but we're helping people grow as well. The City of Wood Village Opportunity Scholarship started in 2020 to help fund and assist students in Wood Village to achieve their career goals. This scholarship is available to Wood Village high school graduates or GED recipients who plan to start their education at an accredited university, college, or trade school. The minimum award amount is \$1,250 plus a stipend to help cover books, materials, or supplies. We also developed a comprehensive resource guide in three languages, and full-service translation either through staff or our contracted provider to help residents and businesses with their questions and needs.

Like most communities, COVID hit us hard. The City Council quickly created relief programs to help pay for utility bills and other needs, supported area food programs, and did what we could to help residents and businesses get through this crisis. We learned a lot through this pandemic, and we have some exciting new projects and efforts underway that will help our community and its residents and businesses be more successful and resilient.



City of Wood Village



City of Fairview

City of Fairview

The City of Fairview was incorporated in 1908 and offers economic opportunities in a quaint downtown as well as commercial and industrial land backed by city services. Fairview also showcases an escape to nature by preserving more open spaces, parks and wetlands than any other city in the Portland metropolitan area. The city's largest park, Salish Ponds Wetlands Park was opened in 1999 and features a riparian habitat, forest trails, wetlands and ponds.

Blue Lake Park has 101 acres of open park land. The lake has a family swim area, pedal boats for rent, playground and picnic areas; a great venue for gatherings both big and small.



City of Troutdale

City of Troutdale

Troutdale, the "Gateway to the Gorge," was incorporated in 1907 and is the largest and oldest city in the West Columbia Gorge. Located at the confluence of the Sandy and Columbia Rivers, it was visited in 1792 by Capt. George Vancouver's crew, and in 1806 by the Lewis & Clark expedition. Troutdale offers unique shops, an outlet mall, art and antique galleries, restaurants, accommodations, and the Reynolds Industrial Park. See the town as it was in the early 1900s as pictured in the mural at Mayors Square. You will also notice the life-size bronze statue of Clara Latourell Larsson, first woman mayor of Troutdale. Down the road, the 1907 historic depot building is home to the Gateway to the Gorge Visitor Center and the Rail Depot Museum. Open daily, the Visitor Center provides information on the Mt. Hood and Columbia River Gorge Region.



City of Cascade Locks

City of Cascade Locks

Located in the "Heart of the Gorge" 40 miles east of Portland, the city of Cascade Locks was incorporated in 1935 and has some of the most spectacular views in the Pacific Northwest. Although Cascade Locks offers a small-town way of life, it has much to experience in culture and heritage. The history of Cascade Locks is tied to the Columbia River and its name came from a set of locks completed in 1896 to improve navigation through the river's cascading rapids. It is home to the Port of Cascade Locks, the Bridge of the Gods, international sailing competitions, sternwheeler river cruises, unique restaurants and breweries, parks, and hiking trails. It is a beautiful community in which to live, work and recreate. The third area to be home to a Gorge Hub, take a break from your journey and enjoy the view.

Arts & Culture in the Gorge

Troutdale - Cascadia Arts Association

Cascadia Arts Association (CAA) is a nonprofit corporation formed in the Spring of 2020. CAA's purpose is enriching East Multnomah County communities by promoting visual, performing, and literary arts. CAA is most known for the Troutdale Arts Festival which takes place on the third weekend of May in Glenn Otto Park. CAA is also a co-sponsor of First Fridays that take place June through September. CAA continues to support community art projects and other arts organizations in East Multnomah County.

CascadiaArtsAssoc.org info@
cascadiaartsassoc.org



Corbett - Friends of Vista House Inc.

Friends of Vista House was established in 1982 by a dedicated group of volunteers and has, since its inception, been the consistent supporter and advocate for Vista House, Oregon's most beloved and treasured icon. Dedicated in 1918, and listed on the National Register of Historic Places, the Vista House is an integral part of the Columbia River Highway National Landmark. FOVH volunteers contribute thousands of hours annually welcoming over one million visitors each year and telling the fascinating history of the Vista House, its place in Oregon history as well as our nation's history. The organization works in partnership with Oregon Parks & Recreation Department to manage, operate and maintain Vista House for all to enjoy, now and for generations to come. FOVH is a designated not-for-profit corporation that receives no federal or state funding. It depends on membership and individual and corporate donations to maintain its operations.

VistaHouse.com 503.679.1891



Award Winning Framing

Fine Art & Gifts

Open Tues – Sat 10-5

(503) 491-8407

ColumbiaRiverGallery.com

Donna Erwin - Owner/Framing Designer
columbiarivergallery@yahoo.com

COLUMBIA RIVER GALLERY
303 E COLUMBIA RIVER HWY, TROUTDALE, OR

Cascade Locks – Cascade Locks Historical Museum

Since 1968, this museum has connected visitors to Cascade Locks with its vibrant community history. Cascade Locks Historical Museum preserves and interprets the diverse heritage of the region for the benefit of visitors and its community. The museum's extensive collection is now available for online viewing of historic items, photos, post cards and other documents.

CascadeLocksMuseum.org
541.203.0881

City of Fairview – Historic Landmarks

Nachakokee Park: The Nachakokee Indian tribe has been traced back to what is now the Fairview area. Nachakokee Park is one of the more interesting historical landmarks as it features the city's original two-cell jail built in 1915. One of the tribes'

villages, located on the west end of Blue Lake Park, has become an archaeological study area.

Heslin Family House: The historic house was built in circa 1890. An example of Western Farmhouse architecture, it is now the home of the Heslin House Museum. The City of Fairview recently completed a survey of 127 historical sites including Smith Memorial Church which was built over 100 years ago.

FairviewOregon.gov
503.665.7929

City of Wood Village – Historic Landmarks

Blue Lake Park:

The Chinook were the first native people to inhabit the hills along the Columbia River. Hundreds thrived in the village of Nechacokee (now referred to as Nichagwli- "nee chalk lee") located near today's Blue Lake Park.

Shaw House:

In 1887, George and Hannah Shaw, both English immigrants, built the two-story farmhouse that still stands on the northeast corner of 238th Drive and NE Halsey Street. Their lone house, located on 208 acres, marked the place in the road from which Wood Village would spring. It now serves as the Wood Village Manor Nursing Home.

Arata Estate:

Stephen A. Arata, an Italian immigrant and the largest liquor distributor in Oregon, bought the Shaw house in 1907. He renovated the property with electricity, pillars, and other frills, and added fields of oats and vineyards to create his country estate. By 1926, the property also served as an electric interurban railway stop known as Arata station.

WoodVillageOr.gov
503.667.6211



Why do we feel that investing in the community is so important?

Because of the sizable returns.

We believe that if we put the time in to help our neighbors—through philanthropy, volunteering, or just plain sweat—the rewards are tenfold. Together with numerous charitable organizations, we're working to make this the kind of place we can call home. And that's the biggest return of all.





Events of the West Columbia Gorge

Photo courtesy of Robin Franzen-Parker City of Gresham

Music Monday's presented by the Center for the Arts Foundation is a free concert series at the Arts Plaza in Gresham, happening each Monday of July and August. 2022 marked the 14th season at the Plaza. The series continues the commitment of the Foundation to bring a diverse, exciting line-up of musicians to the community for FREE family-friendly events. Concerts are from 6:30-8pm each Monday.

www.GreshamCenterForTheArts.org



Photo courtesy of Robin Franzen-Parker City of Gresham

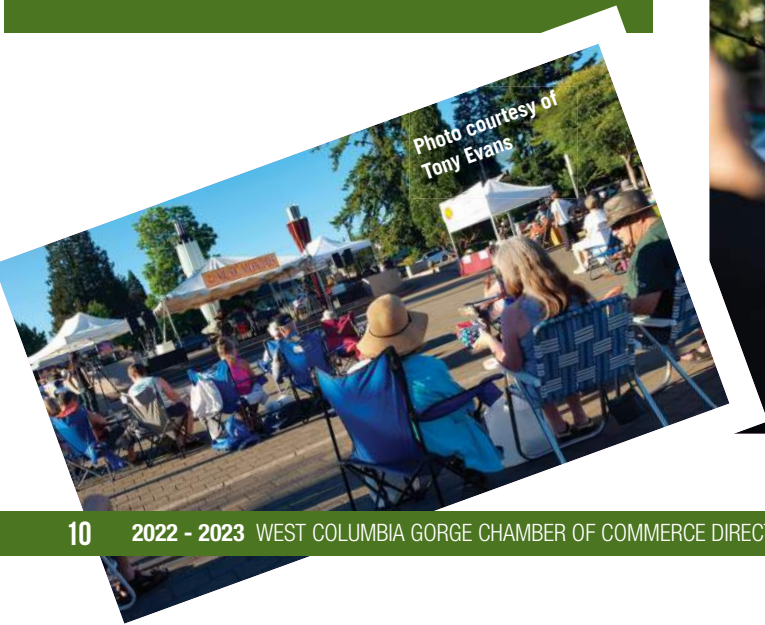


Photo courtesy of Tony Evans

Community Events

MARK YOUR CALENDAR! Check www.westcolumbiagorgechamber.com/events

JANUARY

- Family Friendly Concerts Around the City – Portland Columbia Symphony
See pcsymphony.com for concert details

FEBRUARY

- Fine Art Friday – February 3 – Downtown Troutdale
- Family Friendly Concerts Around the City – Portland Columbia Symphony
See pcsymphony.com for concert details

MARCH

- Fine Art Friday – March 3 – Downtown Troutdale
- Waterfall Run – March 31 – April 2 – Cascade Locks
- Family Friendly Concerts Around the City – Portland Columbia Symphony

APRIL

- Fine Art Friday – April 7 – Downtown Troutdale
- Fairview Easter Egg Hunt – April 8 – Fairview
- Cascade Locks Easter Egg Hunt – April 8 – Port of Cascade Locks
- Easter Sunrise Service – April 9 – Cascade Locks
Easter Egg Hunt:
April 8 – Wood Village
- Family Friendly Concerts Around the City – Portland Columbia Symphony

MAY

- Music at Mayor's Square – First Friday – May 5 – Arts Fest – Troutdale
- First Fridays Troutdale Art Walk – May 5 - Downtown Troutdale
- Troutdale Arts Festival – May 20 & 21 – Glenn Otto Park - Troutdale
- Family Friendly Concerts Around the City - Portland Columbia Symphony

JUNE

- Fire District Breakfast – Corbett
- Fire Truck Pull – Troutdale
- First Friday Troutdale Art Walk – June 2 – Downtown Troutdale
- Music Mondays - Portland Columbia Symphony
See pcsymphony.com for concert details

JULY

- Corbett Fun Fest & Fireworks – July 4 – Corbett
- First Friday Troutdale Art Walk – July 7 - Downtown Troutdale
- Fairview Flicks in the Park – July 14 – Fairview
- Highland Games – July 15 – Mt. Hood Community College - Gresham
- Troutdale SummerFest – July 15 – Troutdale
- Gorge Trail 400 Party: Angel's Trailhead to Wyeth Trail – July 16 - Cascade Locks
- Wood Village City Nite Out - July 21 – Baptist Church - Wood Village
- Fairview on the Green Summer Festival - July 29 - Fairview
- Music Mondays - Portland Columbia Symphony
See pcsymphony.com for concert details

AUGUST

- First Friday Troutdale Art Walk – August 4 - Downtown Troutdale
- Wood Village Free Family Fun Friday: August 4 – Wood Village
- Troutdale Cruise In – August 5 - Downtown Troutdale
- Bridge of the Gods Half Marathon – August 6 - Cascade Locks
- Fairview Flicks in the Park: August 11 - Fairview
- Pacific Crest Trail Days – August 18-19 - Cascade Locks
- Music Mondays - Portland Columbia Symphony

SEPTEMBER

- First Friday Troutdale Art Walk – September 1 - Downtown Troutdale
- Roy Webster Cross Channel Swim - September 4 – Port of Cascade Locks
- Gorgeous Relay – September 16 to 18 - Hood River to Portland
- Bridge of the Goddess 10k & Half Marathon - September 16 - Port of Cascade Locks
- Fall Festival of the Arts – September 21 - Troutdale

OCTOBER

- Fine Art Friday – October 7 - Downtown Troutdale
- Pumpkin Fest - October 28 - Wood Village
- CycloCross Crusade - October 29-30 – Cascade Locks
- Troutdale Trick or Treat – October 31 – Downtown Troutdale
- Family Friendly Concerts around the City - Portland Columbia Symphony
See pcsymphony.com for concert details

SEPTEMBER

- Fine Art Friday – November 3 - Downtown Troutdale
- Family Friendly Concerts around the City - Portland Columbia Symphony

DECEMBER

- Fine Art Friday – December 1 - Downtown Troutdale
- Cascade Locks Christmas - December 3 – Cascade Locks
- Wind-er Wonderland – December 3 – Downtown Troutdale
- Family Friendly Concerts around the City - Portland Columbia Symphony

Explore

Amazing Food Trails of The West Columbia Gorge

From "**Farm-to-Table**" events that share the freshest treats straight from the ground to your table, or pick as you go, local produce and value-added products are the foundation of the food trail. You will have the opportunity to enjoy produce right off the tree or plant, or in a dish or beverage: farms and orchards are at the root.

Gorge Greens is a year-round, certified organic "smart farm" producing nutrient dense microgreens. It is the first agricultural enterprise of the larger Wind River Project. The Wind River Project envisions a circular economy business park creating family - wage jobs in our community and bridging the rural-urban divide while turning waste into valuable resources. To learn more more call: 971.235.9837 - Tours are available Friday OR Saturday Morning.

Markets on the trail offer local products and a point of connection with numerous local farms, ranches and orchards, and the flavors you might experience at some of the Gorge's farm to table offerings. Check out Brigham Fish Market - 541.374.9340 in Cascade Locks. Local Native family of fishers dedicated to providing fresh, wild-caught Columbia River Salmon and Sturgeon. You will have the opportunity to enjoy produce right off the tree or plant, or in a dish and beverage: farms and orchards are at the root of our foods each and every day.

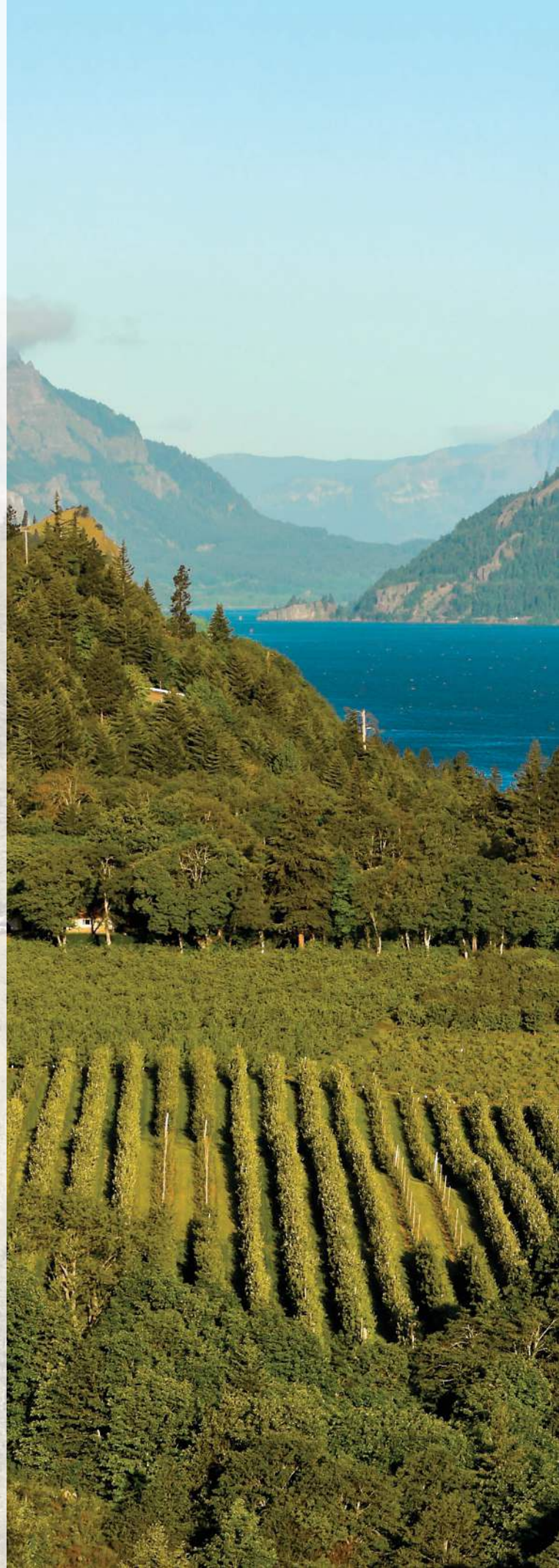
Craft Beverages These craft beverages makers of the Gorge use fruit, grains, and hops from the region for their unique and delicious brews.

These tasting rooms along the trails feature some of the best views of the region and, of course the best flavors.

Gorges Beer Company – Cascade Locks This space is three stories and features two open-air patios with sweeping views of the Columbia River Gorge and Cascade Mountain range. Stop by after a hike while you're out exploring the Gorge! 541.262.2021

Thunder Island Brewing Company – Cascade Locks Founded in 2013 in Cascade Locks, Thunder Island is proud to be a founding member of Breweries in the Gorge. Its outdoor patio offers expansive views of the Gorge. 971.231.4599

Away Days Brewing Co. – Troutdale This Portland-based company will expand operations to the former 100-year-old Troutdale City Hall in 2023. 503.206.4735





Ready Set Gorge

The Gorge has some of the most beautiful hikes in the world. Before heading out, take the time to plan ahead and prepare at www.ReadySetGorge.com. Curated by local land resource managers and outdoor enthusiasts, ReadySetGorge.com is a one-stop resource for planning an outdoor recreation trip to the Columbia River Gorge National Scenic Area. It includes a great map of the area with the most up to date info on trail openings and closures as well as tips for staying safe and ideas for getting the most out of your outing. Go midweek. Or, on weekends, go early (arrive by 9 a.m.) to avoid crowds, secure a parking spot and get great views. Be sure to always have a Plan B and Plan C in case your destination trailhead is full.



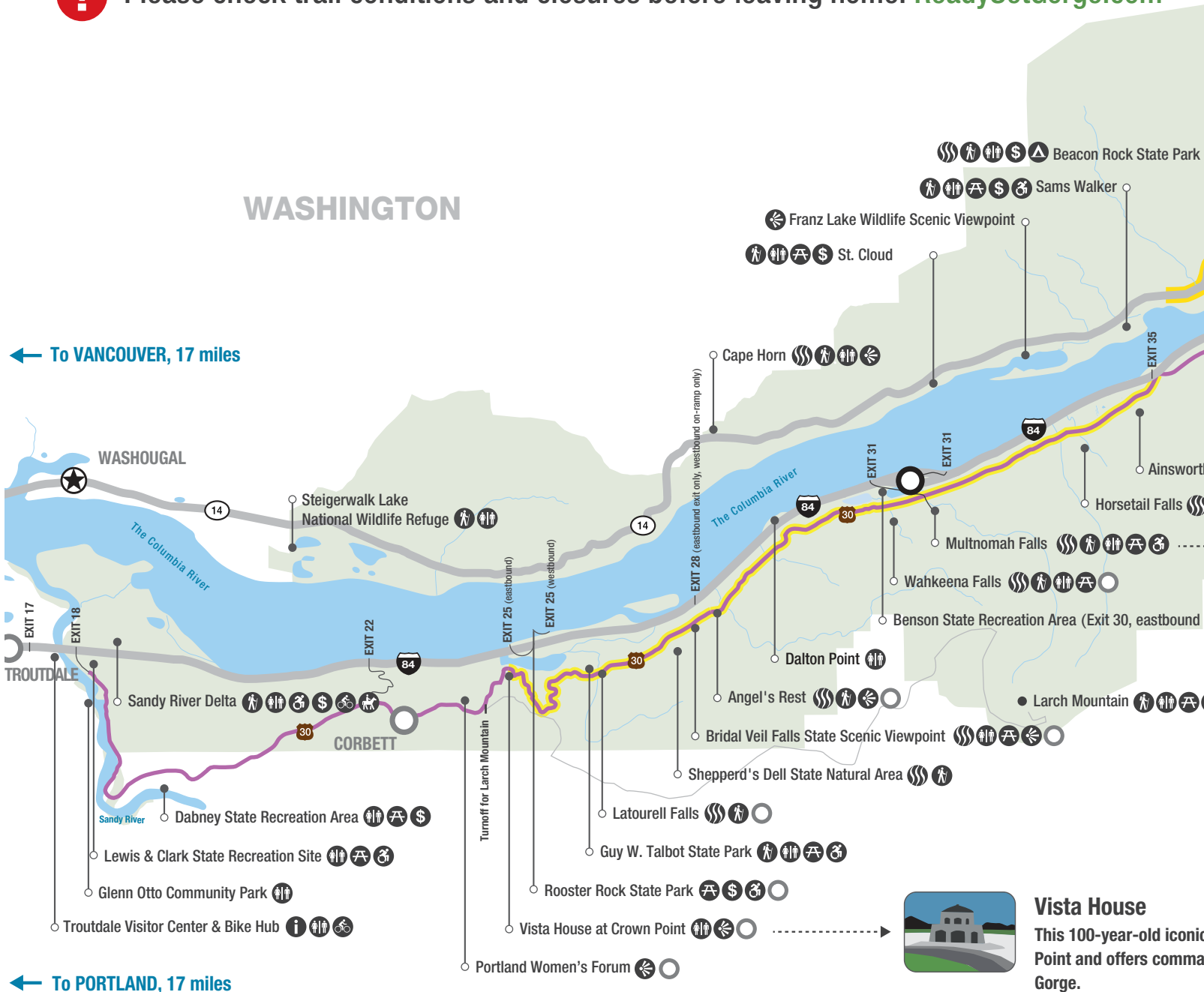
GATEWAY TO THE GORGE **VISITOR CENTER**

47S E HISTORIC COLUMBIA RIVER HIGHWAY
TROUDDALE, OREGON

COLUMBIA RIVER GORGE NATIONAL S

WESTERN GORGE: Stunning views and cascading waterfalls attract more than 2 million visitors to the western Gorge each year. Consider carpooling, taking a shuttle or leaving early to avoid congestion at the trailheads.

 Please check trail conditions and closures before leaving home: ReadySetGorge.com



ReadySetGorge.com

READY, SET, GORGE!

MAKE IT FUN. MAKE IT SAFE. Tips for traveling the Columbia River Gorge

SCENIC AREA



Multnomah Falls

This magnificent 620-foot waterfall is a treat to behold. Take a hike to the Benson Bridge and feel the icy spray on your face. Stop by the Forest Service Visitor Center or have lunch in the historic Multnomah Falls Lodge. Access for I-84 or the Historic Columbia River Highway.

LET SOMEONE ELSE DRIVE! Take a Summer Shuttle.

The Columbia Gorge Express bus takes passengers from Portland to stops along the Oregon side of the Gorge. Schedule and tickets: ColumbiaGorgeExpress.com

The Skamania County Transit Bus stops at nine trailheads on the Washington side of the Gorge, Saturdays and Sundays during the summer months.

For information about car-free travel in the Columbia River Gorge, visit ColumbiaGorgeCarFree.com.

Iconic structure sits perched on Crown
commanding views of the Columbia River

Gorge National Scenic Area.

- | | | |
|-------------------|------------------|--|
| Waterfall | Bike | Transit Stop |
| Trailhead | Equestrian | Transit Stop Transfer |
| Restrooms | Info | Transit Stop Request or Seasonal |
| Picnic Area | Kayaking/Rafting | Historic Columbia River Highway Route (bike on road) |
| Fee Required | Windsurfing | Extreme Congestion and Limited Parking Available |
| Overnight Camping | Wildlife Viewing | Historic Highway State Trail (No Motorized Vehicles) |
| Viewpoint | Wild River | Freeway (Bike Along Shoulder) |
| ADA | Fishing | Multi-Use Path |



Education

Mt. Hood Community College's Small Business Development Center

Mt. Hood Community College (MHCC) is proud to provide local business owners the assistance they need in starting, growing, and managing a personal business. Assistance is available through the college's Small Business Development Center (SBDC) where a team of expert advisers are passionate about entrepreneurship, innovation and building a strong business ecosystem within the region. In addition, business owners will have access to the tools and guidance necessary for their businesses to thrive and grow.

The SBDC provides guidance in a variety of business efforts including:

- Starting and growing a business
- Cashflow management
- Business management
- Succession planning
- Cybersecurity
- Franchise assistance
- Youth entrepreneurship

The MHCC SBDC is the lead center for cybersecurity within the Oregon SBDC Network. Small businesses have the opportunity to work with a cybersecurity adviser to help address their security needs. In addition, our team of experts work with a host of security providers that help advise, guide, and recommend next steps for security needs. The SBDC helps small businesses at every stage – from pre-launch to exit – with the advice and tools needed to be successful. From no cost advising to capital access, the Center has the resources to help.

Feel free to reach out to the SBDC by contacting:

- Ph: 503-491-7658
- Email: OregonSBDC@mhcc.edu
- OregonSBDC.org

Mt. Hood Community College

MHCC offers 120 associate degrees, certificate programs and transfer options at the Gresham Campus, Maywood Park Campus, Bruning Center for Allied Health Education and public schools within the district. Here students may pursue a professional-technical degree, transfer to a four-year institution or take personal enrichment courses. Accredited by the Northwest Commission on Colleges and Universities MHCC is the place for students to accomplish their goals and dreams: www.mhcc.edu.



Cascade Locks Elementary School

Cascade Locks Elementary School, part of the Hood River County School District, is a kindergarten through 5th grade school with an average of 90 students. Cascade Locks is located in the heart of the beautiful Columbia River Gorge where the famous Pacific Crest Trail crosses from Oregon to Washington over the Bridge of the Gods. "We pride ourselves on the ability to give the individualized attention every student deserves."

www.hoodriver.k12.or.us

Corbett School District

"Where students explore, discover and grow their passions" Corbett School District serves students in grades K-12 and includes Corbett Art Program with Spanish (CAPS), a grade school, middle school, and high school. Visit: www.corbett.k12.or.us. Visit: www.corbett.k12.or.us.

Reynolds School District

Eleven elementary schools, one alternative high school, an online academy and one comprehensive high school are in the Reynolds School district which serves the cities of Fairview, Troutdale, and Wood Village. The Reynolds School District's vision is "each and every child is prepared for a world yet to be imagined." Learn more about Reynolds School District at: www.reynolds.k12.or.us Reynolds School District at: www.reynolds.k12.or.us



AVID • SUN Program • Vocal & Instrumental Music
Fine & Performing Arts • Advanced Placement
College Credit Courses • Career Technical Education

 EACH AND EVERY CHILD PREPARED
FOR A WORLD YET IMAGINED
(503) 661-7200 • www.reynolds.k12.or.us



Business & Industry



AN INVITING BUSINESS ENVIRONMENT

The West Columbia Gorge provides the ideal environment to live, work and play! Its smaller communities offer individual attention, proximity to major metropolitan areas, a mix of lower-cost lands, affordable housing, and a capable labor force.



Major Regional Employers:

- Adventist Health/OHSU**
- Amazon**
- Boeing**
- Bonneville Power**
- Hyster-Yale**
- Legacy Mount Hood Medical Center**
- McMenamins Edgefield**
- Microchip Technology, Inc.**
- ON Semiconductor**
- Pape Machinery Agriculture & Turf**
- Port of Portland**
- Reynolds School District**
- Safeway**
- Subaru of America Inc.**
- Swift Transportation**
- Tube Specialties**
- Walsh Trucking**
- Wolcott Electrical & Plumbing**

Business Listings

* Indicates chamber member

ADVERTISING & MARKETING

* **BRAINJAR MEDIA**
 109 N Main Ave #202
 Gresham 97030
 Guy Edwards
 (503) 492-6500
 guyedwards@brainjarmedia.com
 brainjarmedia.com

APARTMENTS

* **THE BYWAY**
 23765 NE Halsey Street
 Wood Village 97060
 Raul Morales
 503-405-4004
 bywaymanager@affinityproperty.com
 www.TheBywayApartments.com

ART

* **CASCADIA ARTS ASSOCIATION**
 P.O. Box 342
 Troutdale 97060
 Martha Denham
 503-929-2708
 info@cascadiaartsassoc.org
 www.cascadiaartsassoc.org

ART GALLERIES

* **ART CENTER/CASWELL SCULPTURES (CAMPUS SCULPTURES)**
 903 E Historic Columbia River Hwy
 Troutdale 97060
 Alison Caswell
 503-515-5673
 alison@campussculptures.com
 www.caswellsculpture.com
 (Please see ad on page 8)

* **COLUMBIA RIVER GALLERY**
 303 E Historic Columbia River Hwy
 Troutdale 97060
 Donna Erwin
 503-491-8407
 donna@columbiarivergallery.com
 www.columbiarivergallery.com

* **GREENE BRONZE - (FORMALLY SODERBERG GALLERY)**
 505 Wanapa St
 Cascade Locks 97014
 Heather Soderberg-Greene
 503-869-6459
 heathergreene3@icloud.com
 www.heathersoderberg.com

All About



utomotive



COMPLETE SERVICE & REPAIRS ON FOREIGN & DOMESTIC VEHICLES

LET US BE YOUR DEALERSHIP ALTERNATIVE

503.465.2926

allaboutautomotive.com
 139 NW 2nd Street
 Downtown Gresham

WE TREAT YOUR CAR AS IF IT WERE OUR OWN



Gresham Ford
The Dealer with A Heart!



**TRY LOCAL
 LOVE LOCAL
 SHOP LOCAL**

**1999 E Powell Blvd.
 Gresham**

503-665-0101

GreshamFord.com



All Makes | All Models



Quick Lane
 Tire & Auto Center

No Appointment Needed



**W • E • S • T
 C O L U M B I A
 G O R G E**

**C H A M B E R • O F
 C O M M E R C E**

**Helping local
 business network
 and grow together**

For more information
 or to join today
info@westcolumbiagorgechamber.com

AUTOMOTIVE/CAR SALES & SERVICE

*** ALL ABOUT AUTOMOTIVE**

139 NW 2nd St.
Gresham 97030
Karen Johnston
503-465-2926
karen@allaboutautomotive.com
www.allaboutautomotive.com
(Please see ad on page 19)

GRESHAM FORD

1999 E Powell Blvd.
Gresham, 97080
Bess Wills
503-665-8191
bess@greshamford.com
www.greshamford.com
(Please see ad on page 19)

*** WESTON BUICK GMC KIA**

22555 SE Stark St
Gresham 97030
Jan Weston
503-665-2166
janw@buyweston.com
www.buyweston.com

BANKS/FINANCIAL INSTITUTIONS

*** FIRST COMMUNITY CREDIT UNION**

1531 NE Park Ln
Fairview 97024
Khari Applewhite
503-492-8976
khari.applewhite@firstccu.org
www.myfirstccu.org

*** PACIFIC NW FEDERAL CREDIT UNION**

12005 NE Erin Way St
Portland 97220
Diane Calvin
503-256-5858
dianec@pnwfcu.org
www.pnwfcu.org/home/home

*** US BANK CHERRY PARK**

2541 SW Cherry Park Rd
Troutdale 97060
Shadi Botrous
503-661-3131
shadi.botrous@usbank.com
usbank.com

BARBER SHOPS

*** TROUTDALE BARBER SHOP**

146 Buxton Road
Troutdale 97060
Kathy Phillips
503-661-6518
kathyphillips060@yahoo.com
troutdale-barber-shop.business.site/

BOOKKEEPING & TAX SERVICES

BECKER STRATEGIC ACCOUNTING

501 NE Hood Ave
Gresham 97030
Candi Bossert
503-252-9509
candi@beckerbookkeeping.com
beckerstrategicaccounting.com
(Please see ad on page 20)

*** GHIONI TAX & ACCOUNTING SOLUTIONS, LLC**

958 NE Kelly Ave. Suite B
Gresham 97030
Michaela Ghioni
503-465-3720
michaela@ghionitax.com
ghionitax.com

BUSINESS RESOURCES

*** MT. HOOD COMMUNITY COLLEGE SMALL BUSINESS DEVELOPMENT CENTER**

18633 SE Stark Street Suite 3B
Portland 97233
Ibrahim Alhussain, Dir. Gerri Raisanen, Program Assistant
503-491-7658
OregonSBDC@mhcc.edu; Ibrahim.Alhussain@mhcc.edu; gerri.raisanen@mhcc.edu
oregonsbdc.org/centers/mt-hood-sbdc/your-team/

BUSINESS RESOURCES/ OFFICE MACHINES

*** PACIFIC OFFICE AUTOMATION**

14747 NW Greenbrier Pkwy
Beaverton 97006
Palani Correa
503.601.2356
Palani.Correa@pacificoffice.com
www.pacificoffice.com

BECKER STRATEGIC ACCOUNTING & TAX SERVICES
Accuracy Integrity Personal Service

You need a strong partner for your finances. We are that partner.
ACCOUNTING SERVICES - PAYROLL SERVICES - TAX SERVICES

Including:
- Financial Consulting - AR/AP Services - Budget Forecasts
- Cash Flow Reporting - Profit & Loss - Job Costing

Let our team take care of your accounting needs!

503.252.9509 | BECKERSTRATEGICACCOUNTING.COM
501 NE HOOD AVE. SUITE 248 | GRESHAM, OR 97030

Our Happy Clients:
"Very friendly staff. They heard and assisted with our tax, payroll and strategic business planning that increased my revenue by 10%."
JENTRY B. - GRESHAM

* PORT OF PORTLAND
7200 NE Airport Way
Portland 97218
Kenneth Anderton
503-415-6575
kenneth.anderton@portofportland.com
www.portofportland.com

* REP. ZACH HUDSON
Zach Hudson
503-986-1449
rep.zachhudson@oregonlegislature.gov
www.oregonlegislature.gov/hudson.

HOTELS/MOTELS

* BEST WESTERN PLUS CASCADE INN & SUITES
23525 NE Halsey St
Wood Village 97060
Kimberly Conley
503-491-9700
gm@bwtroutdale.com
www.bwtroutdale.com

* COMFORT INN - COLUMBIA GORGE GATEWAY
1000 NW Graham Rd
Troutdale 97060
Donele Fowler
503-492-2900
gm@cittroutdale.com
www.choicehotels.com

* MCMENAMINS EDGEFIELD
2126 SW Halsey St
Troutdale 97060
Renee Rank
503-669-8610
reneer@mcmenamins.com
www.mcmenamins.com

* MOTEL 6
1610 NW Frontage Rd
Troutdale 97060
Amy Byers
503-665-2254
M60407bo@motel6.com
www.motel6.com

INDIVIDUAL MEMBERS

* RUSH, CHERYL
2542 SW Indian Mary Ct.
Troutdale 97060
Cheryl Rush
cheryldrush@gmail.com

INFORMATION TECHNOLOGY SERVICES/COMPUTERS

* PINNACLE COMPUTER SOLUTIONS
4233 SE 182nd Ave #361
Gresham 97030
Randy Cummings
503-318-1552
randy.cummings@pinnacletechnp.org
www.pinnaclecomputersolutions.com

INSURANCE SERVICES

* FARMERS INSURANCE-TREVIN WEBB INSURANCE AGENCY
21901 NE Halsey St., Suite #204
Fairview 97024
Trevin Webb
503-667-2820
trevin@grownupinsurance.com
www.GrownUpInsurance.com

* JENNY SMITH INSURANCE AGENCY/ STATE FARM INS.
334 W. Historic Columbia River Highway
Troutdale 97060
Jenny Smith
503-492-4400
jenny.smith.gdzp@statefarm.com
www.jennysf.com

* **KENWAY BENEFITS GROUP**
2542 SW Indian Mary Court
Troutdale 97060
Geoffrey Kenway
503-349-3599
kenwaybenefitsgroup@gmail.com
kenwaybenefitsgroup.com
(Please see ad on page 24)

* TOP TO BOTTOM JANITORIAL
Troutdale 97060
Elean Mickles/Jeff Roundtree
503-200-7637
elleancarter1@gmail.com

LEGAL SERVICES

* GANDY LEGAL SERVICES
PO Box 487
Corbett, OR 97019
Rebecca Gandy
503-753-4267
rebgandy@gmail.com
www.gandylegalservices.com

* RICHARD A. WEILL, ATTORNEY
102 W. Historic Columbia River Hwy.
Troutdale 97060
Richard Weill, PC
503-492-8911
rawpc@aol.com
www.troutdalelaw.com

* WARREN ALLEN, LLP
10535 NE Glisan Street Suite 200
Portland 97220
John O'Hara; Warner Allen
503-255-8795
allen@warrenallen.com ohara@warrenallen.com
warrenallen.com

LIFE-TIME HONORED MEMBERS

* LIATY, CHARISSE
Past President West Columbia Gorge Chamber

MEDICAL - DENTAL

* TROUTDALE DENTAL
191 E Historic Columbia River Hwy
Troutdale 97060
Elliott Omlin
503-674-8767
elliott@arvory.com
https://www.troutdaledental.com

MEDICAL - HEALTHCARE

ADVENTIST HEALTH PORTLAND
10123 SE Market Street
Portland 97216
503-257-2500
www.adventisthealth.org/portland
(Please see ad on inside front cover)

MEDICAL - HOSPICE

MT. HOOD HOSPICE
39085 Pioneer Blvd.
Sandy, 97055
www.mthoodhospice.org
971-400-7030
(Please see ad on page 23)

MEDICAL - VISION CLINICS

* TROUTDALE VISION CLINIC
226 E Historic Columbia River Hwy
Troutdale 97060
Dr. Bloemers
503-492-3897
drbloemers@troutdalevision.com
www.troutdalevision.com

MUSEUMS

* TROUTDALE HISTORICAL SOCIETY
732 E Historic Columbia River Hwy
Troutdale 97060
LeAnn Stephan
503-661-2164
troutdalehistory@gmail.com
www.troutdalehistory.org/



**Your non-profit, community hospice
serving these communities since 1980:
Troutdale, Fairview, Gresham,
Corbett and Wood Village.**

mthoodhospice.org | 503.668.5545 | non-profit

FITNESS - GYMS

* LYFT FITNESS

23500 SE Stark St
Gresham 97030
Chris Card
(503) 667-2290
chris@lyftfitnessgresham.com
lyftfitnessgresham.com
(Please see ad on page 22)

FUELS - AUTO & HOME HEATING

* POUNDER OIL SERVICE, INC.

521 SW Halsey St.
Troutdale 97060
Angelina Rickert
503-695-2555 503-674-7501
angelina@pounderoil.com
www.pounderoil.com

FUNERAL SERVICES

* BATEMAN CARROLL FUNERAL HOME

520 W Powell Blvd
Gresham 97030
Jim Jackson
503-665-2128
james.jackson@dignitymemorial.com
www.batemanrollfunerals.com

* GRESHAM MEMORIAL CHAPEL

257 SE Roberts Ave
Gresham 97080
John Gerbish
503-618-8176
jcg-gfc@frontier.com
www.greshamfuneral.com

GARBAGE/WASTE DISPOSAL

* CROWN POINT REFUSE

2430 NW Marine Drive
Troutdale 97060
Randall Burbach
503-695-3239
cpr@ortrash.com
crownpointrefuse.com

TWELVE MILE DISPOSAL SERVICE

2430 NW Marine Drive
Troutdale 97060
Randall Burbach
503-661-0255
cpr@ortrash.com
crownpointrefuse.com

* WASTE MANAGEMENT

7227 NE 55th Ave
Portland 97218
Dean Kampfer
503-493-7831
dkampfer@wm.com
www.wmnorthwest.com

GOVERNMENT

* CITY OF CASCADE LOCKS

140 Wa Na Pa St
Cascade Locks 97014
Gordon Zimmerman
541-374-8484
gzimmerman@cascade-locks.or.us
www.cascadelocks.com

* CITY OF FAIRVIEW

1300 NE Village St
Fairview 97024
Nolan Young
503-674-6221
youngn@ci.fairview.or.us
fairvieworegon.gov/
(Please see ad on page 22)

* CITY OF TROUTDALE

219 E Historic Columbia River Hwy
Troutdale 97060
Ray Young
503-665-5175
ray.young@troutdaleoregon.gov
www.ci.troutdale.or.us/
(Please see ad on page 1)

* CITY OF WOOD VILLAGE

23335 NE Halsey
Wood Village 97060
Greg Dirks
503-667-6211
gregd@woodvillageor.gov
www.woodvillageor.gov/
(Please see ad on page 3)

* FRIENDS OF REP. CHRIS GORSEK

900 Court St NE, H-486
Salem 97301
Jason Hitzert
503-986-1449
rep.chrisgorsek@state.or.us
www.oregonlegislature.gov/gorsek

* PORT OF CASCADE LOCKS

427 SW Portage Rd
Cascade Locks 97014
Olga Kaganova
541-374-2407
okaganova@portofcascadelocks.org
portofcascadelocks.org



Gresham's #1 Health Club
Family Owned & Operated

LYFT FITNESS

- Classes | Personal Training
- Swimming Pool | Steam Room | Dry Sauna
- Basketball Court | Boxing & Cycle Studio
- Childcare | Tanning | Smoothie Bar

Hours M - F: Open 24 Hours Sat & Sun: 7 am to 7 pm

Join Online! LyftFitnessGresham.com
503.667.2290
23500 SE Stark Street Gresham 97030

Visit Fairview!

The adventure begins with a visit to the world's tallest fork.
Then, re-fuel at the new Fairview Food Plaza!

World Cuisine from 16 Food Carts
Indoor Dining Pavilion with Beer Hall
Outdoor Seating

Fairview Sunday Market
May to September

Corner of NE 223rd & Halsey Street
FairviewFoodPlaza.com
FairviewOregon.gov



Fairview - The place to be for great food, nature trails, fishing, water recreation and more!

* PORT OF PORTLAND
7200 NE Airport Way
Portland 97218
Kenneth Anderton
503-415-6575
kenneth.anderton@portofportland.com
www.portofportland.com

* REP. ZACH HUDSON
Zach Hudson
503-986-1449
rep.zachhudson@oregonlegislature.gov
www.oregonlegislature.gov/hudson.

HOTELS/MOTELS

* BEST WESTERN PLUS CASCADE INN & SUITES
23525 NE Halsey St
Wood Village 97060
Kimberly Conley
503-491-9700
gm@bwtroutdale.com
www.bwtroutdale.com

* COMFORT INN - COLUMBIA GORGE GATEWAY
1000 NW Graham Rd
Troutdale 97060
Donele Fowler
503-492-2900
gm@cittroutdale.com
www.choicehotels.com

* MCMENAMINS EDGEFIELD
2126 SW Halsey St
Troutdale 97060
Renee Rank
503-669-8610
renee@mcmenamins.com
www.mcmenamins.com

* MOTEL 6
1610 NW Frontage Rd
Troutdale 97060
Amy Byers
503-665-2254
M60407bo@motel6.com
www.motel6.com

INDIVIDUAL MEMBERS

* RUSH, CHERYL
2542 SW Indian Mary Ct.
Troutdale 97060
Cheryl Rush
cheryldrush@gmail.com

INFORMATION TECHNOLOGY SERVICES/COMPUTERS

* PINNACLE COMPUTER SOLUTIONS
4233 SE 182nd Ave #361
Gresham 97030
Randy Cummings
503-318-1552
randy.cummings@pinnacletechnp.org
www.pinnaclecomputersolutions.com

INSURANCE SERVICES

* FARMERS INSURANCE-TREVIN WEBB INSURANCE AGENCY
21901 NE Halsey St., Suite #204
Fairview 97024
Trevin Webb
503-667-2820
trevin@grownupinsurance.com
www.GrownUpInsurance.com

* JENNY SMITH INSURANCE AGENCY/ STATE FARM INS.
334 W. Historic Columbia River Highway
Troutdale 97060
Jenny Smith
503-492-4400
jenny.smith.gdzp@statefarm.com
www.jennysf.com

* **KENWAY BENEFITS GROUP**
2542 SW Indian Mary Court
Troutdale 97060
Geoffrey Kenway
503-349-3599
kenwaybenefitsgroup@gmail.com
kenwaybenefitsgroup.com
(Please see ad on page 24)

* TOP TO BOTTOM JANITORIAL
Troutdale 97060
Elean Mickles/Jeff Roundtree
503-200-7637
elleancarter1@gmail.com

LEGAL SERVICES

* GANDY LEGAL SERVICES
139 SE Curtis Dr
Corbett 97019
Rebecca Gandy
503-753-4267
rebgandy@gmail.com
www.gandylegalservices.com

* RICHARD A. WEILL, ATTORNEY
102 W. Historic Columbia River Hwy.
Troutdale 97060
Richard Weill, PC
503-492-8911
rawpc@aol.com
www.troutdalelaw.com

* WARREN ALLEN, LLP
10535 NE Glisan Street Suite 200
Portland 97220
John O'Hara; Warner Allen
503-255-8795
allen@warrenallen.com ohara@warrenallen.com
warrenallen.com

LIFE-TIME HONORED MEMBERS

* LIATY, CHARISSE
Past President West Columbia Gorge Chamber

MEDICAL - DENTAL

* TROUTDALE DENTAL
191 E Historic Columbia River Hwy
Troutdale 97060
Elliott Omlin
503-674-8767
elliott@arvory.com
https://www.troutdaledental.com

MEDICAL - HEALTHCARE

ADVENTIST HEALTH PORTLAND
10123 SE Market Street
Portland 97216
503-257-2500
www.adventisthealth.org/portland
(Please see ad on inside front cover)

MEDICAL - HOSPICE

MT. HOOD HOSPICE
39085 Pioneer Blvd.
Sandy, 97055
www.mthoodhospice.org
971-400-7030
(Please see ad on page 23)

MEDICAL - VISION CLINICS

* TROUTDALE VISION CLINIC
226 E Historic Columbia River Hwy
Troutdale 97060
Dr. Bloemers
503-492-3897
drbloemers@troutdalevision.com
www.troutdalevision.com

MUSEUMS

* TROUTDALE HISTORICAL SOCIETY
732 E Historic Columbia River Hwy
Troutdale 97060
LeAnn Stephan
503-661-2164
troutdalehistory@gmail.com
www.troutdalehistory.org/



**Your non-profit, community hospice
serving these communities since 1980:
Troutdale, Fairview, Gresham,
Corbett and Wood Village.**

mthoodhospice.org | 503.668.5545 | non-profit

* EAST COUNTY HISTORICAL ORGANIZATION (ECHO)
17111 NE Sandy Blvd.
Portland 97230
Peggy Olin
503.975.7782
info@echohistory.org
www.echohistory.org

* MARYHILL MUSEUM OF ART
35 Maryhill Museum Dr
Goldendale 98620
Colleen Schafroth
509-773-3733
colleen@maryhillmuseum.org
www.maryhillmuseum.org/

NEWS & DIGITAL MEDIA

* **PAMPLIN MEDIA GROUP
(COMMUNITY NEWSPAPERS/
PORTLAND TRIBUNE)**

6605 SE Lake Rd
Portland 97222
Chris Sweet
971-204-7886
csweet@pamplinmedia.com
pamplinmediapublishing.com

NON-PROFIT COMMUNITY ORGANIZATIONS

* **ALSO (ADVOCATES FOR LIFE SKILLS AND OPPORTUNITY)**

10541 SE Cherry Blossom Dr
Portland 97216
Sarah Cinquini
503-489-6565
sarah.cinquini@alsoweb.org
www.alsoweb.org
(Please see ad on page 24)



GEOFF KENWAY
THE INSURANCE BROKER THAT COMES TO YOU!

Health Insurance - Property & Casualty - Business Insurance - Legal Representation

Call for a Free Quote
503.349.3599
kenwaybenefitsgroup.com



ALSO Advocates for Life Skills & Opportunity

Heart work is our work.

Promoting the full inclusion of people experiencing disabilities in the life of their community.

Residential • Supported Living • Employment

We're hiring! heartworkoregon.com



* **KIWANIS CLUB OF THE COLUMBIA GORGE**
 P.O. Box 152
 Troutdale 97060
 John Leamy
 503-492-1243
 jleamy3@comcast.net;
 www.columbiagorgekiwanis.org/

* **METROEAST COMMUNITY MEDIA (501C3)**
 829 NE 8th St
 Gresham 97030
 Tomi Douglas
 971 277-6645
 tomi@metroeast.org
 www.metroeast.org/

* **SNOWCAP COMMUNITY CHARITIES**
 17805 SE Stark Street
 Portland 97233
 Kirsten Wageman, Executive Director
 503-667-8848
 kirsten@snowcap.org
 www.snowcap.org

* **TROUTDALE HISTORICAL SOCIETY**
 732 E Historic Columbia River Hwy
 Troutdale 97060
 LeAnn Stephan
 503-661-2164
 troutdalehistory@gmail.com
 www.troutdalehistory.org/

**PET FOOD SUPPLIES/
 VETERINARY SERVICES**

* **EXCLUSIVE PET SUPPLY**
 21829 NE Halsey Street
 Fairview 97024
 Joseph Cole
 503-491-1111
 exclusivepetfood@gmail.com
 shop.exclusivepetsupply.com

* **THERESA'S COUNTRY FEED & PET**
 22741 NE Park Lane Unit E
 Wood Village 97060
 Brie & Shawn Connelly
 503-766-4570
 tcfpwoodvillage@gmail.com
 www.theresascountryfeedandpet.com

PLUMBING, HEATING, HVAC

* **APOLLO DRAIN AND ROOTER SERVICE**
 853 NE Harlow Rd.
 Troutdale 97060
 Karen Bailey
 503-433-2680
 karen@apollodrain.com
 www.apollodrain.com
 (Please see ad on page 25)

**PROMO MARKETING/
 SCREENPRINT EMBROIDERY**

* **SANDY RIVER MARKETING**
 2208 NW Birdsdales Unit 8
 Gresham 97030
 Don DeVore
 503-492-2348
 orders@sandyrivermarketing.com
 www.sandyrivermarketing.com
 (Please see ad on page 25)

PUBLIC UTILITIES

* **NW NATURAL**
 250 SW Taylor Street
 Portland 97204
 Darrell Nelson
 503-610-7284
 darrell.nelson@nwnatural.com
 www.nwnatural.com
 (Please see ad on page 9)

REAL ESTATE

* **KMO REAL ESTATE**
 333 N. Main Avenue Suite 109
 Gresham 97030
 Sue O'Halloran
 503-661-8000
 Sue@KMORealEstate.com
 www.kmo-real-estate.com

*** REMAX EQUITY GROUP /
 KAREN SCHAAF, COMMERCIAL &
 RESIDENTIAL BROKER**

2072 NE Burnside Rd
 Gresham 97030
 Karen Schaaf
 503-705-6987
 karenschaaf@remax.net
 www.karenschaafrealestate.com
 (Please see ad on page 26)

**RESTAURANTS/PUBS/BREWERIES/
 DRIVE THRU**

* **ALEXS - BAR**
 1712 NE 223rd Avenue
 Fairview 97024
 Anestis Polizos
 503-665-3400
 polizosa@gmail.com
 www.alexs-bar.com

* **BANDITS BAR AND GRILL**
 108 E Historic Columbia River Hwy
 Troutdale 97060
 Robb Polanco and Jamie Iverson, co-owners
 503-328-8120
 banditsrobb@gmail.com
 www.banditsbarandgrill.com

MCMENAMINS EDGEFIELD
 2126 SW Halsey St
 Troutdale 97060
 Renee Rank
 503-669-8610
 reneer@mcmenamins.com
 www.mcmenamins.com

APOLLO
 PLUMBING • HEATING & AIR CONDITIONING

We Keep Life Flowing™

PLUMBING • HEATING • COOLING

Portland 503-610-0087 | Vancouver 360-326-0396 | apolloservices.com

Licensed & Bonded - CCB# 49418 WA LIC# APOLDR995MP

\$50.00 OFF
 Any Plumbing or Drain Service of \$350 or more.
 Coupon Code: 101

*Restrictions apply, can not be combined with other discounts. Call for more details.

Locally Owned & Operated

**PRODUCTS FOR
 ALL OF LIFE'S ADVENTURES!**

Screen Print • Embroidery • Promotional Products

SANDY RIVER MARKETING

Bring In This Ad for
10% OFF Your First Order!
 valid through June 2023

503.492.2348
SandyRiverMarketing.com
 Orders@SandyRiverMarketing.com

* SUGARPINE DRIVE IN
1208 E Historic Columbia River Hwy
Troutdale 97060
Ryan Domingo/Emily Cafazzo
503-695-5328
hello@sugarpinedrivein.com
sugarpinedrivein.com

* TASTE OF VILLAGE
CHINESE RESTAURANT
302 E Historic Columbia River Hwy
Troutdale 97060
Martin Tang
503-666-7768
martin_tang@msn.com
www.tasteofvillagechinese.com

RETAIL - CANNABIS

* TETRA CANNABIS
809 NE Harlow Rd
Troutdale 97060
Gabe Ysasaga
(503) 489-4568
gabe@tetrapdx.com
tetrapdx.comtroutdale/

RETAIL - CELLULAR PHONES

* CELLULAR PLUS VERIZON
3163 SW 257th
Troutdale 97060
Joseph Walter
503-328-9159
jwalter@cellularplus.com
www.cellularplus.comlocations/24318/troutdale/

RETAIL - CLOTHING

* BOOT BARN
1108 NW Frontage Road
Troutdale 97060
Teresa Fierro
503-491-4825
b2b.trou92@bootbarn.com
www.BootBarn.com

*** COLUMBIA GORGE OUTLETS**

450 NW 257th Ave #400
Troutdale 97060
Noa Brothers
503-669-8196
nbrothers@woodmont.com
www.shopcolumbiagorgeoutlets.com
(Please see ad on page 30)

* PENDLETON OUTLET
450 NW 257th Way #208
Troutdale 97060
(503) 669-2900

RETAIL - FLORISTS & PLANTS

* QUAD'S GARDEN
1643 NE Market Drive
Fairview 97024
Sadie Sifuentes
503-252-6650
quadsgardeninvoice@yahoo.com
www.quadsgarden.org

RETAIL - GIFTS

ARTISTREE NW
10701 SE Hwy 212 Unit I-2
Clackamas 97015
Jean Linn
503-869-4902
artistreenw@gmail.com
artistreenw.com
(Please see our ad on page 27)

* SPRUCE GIFTS AND PROVISIONS
70741 NE Sturgeon Lane
Cascade Locks 97014
Angel Williams
541-374-8447
sprucegiftsandprovisions@myowf.org
www.oregon-wildlife.org

RETAIL - HOME FURNISHINGS

* CELEBRATE ME HOME
319 E. Historic Columbia River Highway
Troutdale 97060
Mary Greenslade
503-618-9394
celebratemehomeonline.com

RETAIL - LEASING

* **COLUMBIA GORGE OUTLETS**
450 NW 257th Ave #400
Troutdale 97060
Noa Brothers
503-669-8196
nbrothers@woodmont.com
www.shopcolumbiagorgeoutlets.com
(Please see ad on page 30)

RETAIL - LIQUOR STORES

* TROUTDALE LIQUOR
3030 NE Hogan Rd #A
Gresham 97030
Eric Johnston
503-665-5227
troutdaleliquor@gmail.com
www.troutdaleliquor.com

RETAIL - TUPPERWARE

* TUPPERWARE
24320 S.E. Rugg Rd.
Damascus 97089
Debra Sanchez, Hector Aguayo
503-894-2021
buytupperware4u@gmail.com
www.Debsanchez1.my.tupperware.com

RETAIL - VENDING

* H2OREGON
3575 Crates Way
The Dalles 97058
Tim Dougherty
503-799-6691
accounting@h2oregonwater.com
www.h2oregonwater.com

SENIOR LIVING COMMUNITIES

* CHERRY PARK PLAZA SENIOR
LIVING COMMUNITY
1323 SW Cherry Park Rd
Troutdale 97060
Bailey Lalum
503-491-1661
crd@cherryparkplaza.com
www.cherryparkplaza.com

* GOOD SAMARITAN SOCIETY-FAIRLAWN
VILLAGE
1280 NE Kane Dr
Gresham 97030
Jackie Bradford
503-667-1965
jbradfo1@good-sam.com
www.good-sam.com

SPORTS & RECREATION

* **ALL ABOUT
ADVENTURE EXCURSIONS**
2522 SW 41st St.
Gresham 97080
Edward Chin
503-781-6473
aaaexcursions@gmail.com
www.aaaexcursions.com
(Please see ad on page 28)

* LANCE FISHER - FISHING
PO Box 2261
Lake Oswego 97035
Lance Fisher
(503) 447-8330
info@lancefisherfishing.com
www.lancefisherfishing.com




Karen Schaaf - Broker
Licensed in Oregon
Serving E. Multnomah County

Commercial & Residential Properties
Accredited Commercial Professional
Graduate, REALTOR® Institute

503.705.6987 Mobile • KarenSchaaf.EquityGroup.com

*** U.S. WORLD CLASS TAEKWONDO**

906 NW Corporate Drive
Troutdale 97060
Karla Ortiz
503-674-7774
karla@kidslovetkd.com
kidslovetkd.com
(Please see ad on page 28)

*** NW SELF STORAGE TROUTDALE**

576 SW Halsey St
Troutdale 97060
Maryann Stephens
503-492-5813
troutdalemini@nwselfstorage.com
www.nwselfstorage.com

*** GOIN' GAMING**

27084 SE Stark Street
Troutdale 97060
Becky Schmid
503-328-8166; 503-504-1348
goinggamingstore@gmail.com
www.goinggaming.com

STORAGE

*** FIVE STAR STORAGE**

20315 NE Sandy Blvd
Fairview 97024
Lynn Woods
503-669-8000
aliihale@5star-group.com
www.5star-storage.com

TOURISM

*** BONNEVILLE LOCK & DAM VISITOR CENTER**

1-84 Exit 40
Cascade Locks 97014
Lucille Ausman
541-374-8820
Lucille.M.Ausman@usace.army.mil
www.nwp.usace.army.mil/bonneville/

*** CASCADE LOCKS TOURISM COMMITTEE**

140 WaNaPa Street
Cascade Locks 97014
Annie VanDomelen
541-374-8484
tourism@cascade-locks.or.us
www.cascadelocks.com

*** CASCADE LOCKS VISITOR CENTER**

417 SW Portage Rd
Cascade Locks 97014
(541) 374-8535
tourism@cascade-locks.or.us
www.cascadelocks.com

*** COLUMBIA GORGE TOURISM ALLIANCE**

Emily Reed
503-360-3532
emily@columbiagorgetourismalliance.org
www.columbiagorgetourismalliance.org/

MULTNOMAH FALLS LODGE

53000 E Historic Columbia River Hwy
Bridal Veil 97010
Jill Willis
503-695-2376
jill@multnomahfallsodge.com
www.multnomahfallsodge.com

*** SASQUATCH SHUTTLE**

1 West Mill Rd.
Bridal Veil 97010
Alan Dayley
503-852-9092
info@sasquatchshuttle.com
www.sasquatchshuttle.com

*** TRAVEL OREGON**

319 SW Washington Street, Suite 700
Portland 97204
Lizzie Keenan
971-378-4006
Lizzie@hood-gorge.com
www.traveloregon.com

*** TRAVEL PORTLAND**

100 SW Main Street, Suite 1100
Portland 97204
Josie Ratnayake
503-548-0970
josie@travelportland.com
www.travelportland.com

C.P. Trips, Inc.

MAKING YOUR DREAM VACATIONS COME TRUE!

Cindy Passannante
Your Local & Chamber Travel Specialist

The Lightbox Academy

An Online Travel & Tourism Career Education Program

Maria Brown
VP & Education Director

360.607.2025
miastraveldeskg@gmail.com

503.658.5646

cptrips@aol.com • www.cptripsinc.com



TRANSPORTATION - SHUTTLE SERVICES

*** SASQUATCH SHUTTLE**

1 West Mill Rd.
Bridal Veil 97010
Alan Dayley
503-852-9092
info@sasquatchshuttle.com
www.sasquatchshuttle.com

TRAVEL SERVICES

*** C.P. TRIPS, INC.**

12675 SE Hacienda Dr
Damascus 97009
Cindy Passannante
503-658-5646
cptrips@aol.com
www.cptripsinc.com
(Please see ad on page 27)

THE LIGHTBOX ACADEMY
 12675 SE Hacienda Dr
 Damascus 97009
 Cindy Passannante & Maria Brown
 503-658-5646
 360-607-2025
 cptrips@aol.com
 www.cptripsinc.com
 (Please see ad on page 27)

YOUTH ORGANIZATIONS/SOCIAL SERVICES

* **YOUTH UNLIMITED, INC.**
 121 E. Historic Columbia River Highway
 Troutdale 97060
 April Johnson
 Office Phone: 971-293-9237
 ajohnson@yuioregon.net

NOTES & NUMBERS

NOTES & NUMBERS



ALL ABOUT ADVENTURE EXCURSIONS

Guided Fishing Trips

- Bass
- Walleye
- Sturgeon
- Crabbing
- Bottom Fish
- Sight Seeing Tours
- Sonar Training

USCG Licensed




Cabela's

LOWRANCE PRO STAFF



For Booking Information:
503.781.6473
 www.aaaexcursions.com



Helping local business network and grow together

For more information or to join today
 info@westcolumbiagorgechamber.com

U.S. WORLD CLASS TAEKWONDO



THE LARGEST GROUP OF PROFESSIONAL TAEKWONDO SCHOOLS IN THE WESTERN UNITED STATES.

- LOCATIONS IN TROUTDALE, GRESHAM & SANDY
- PROGRAMS FOR ALL AGES AND LEVELS
- DEVELOP COORDINATION, PHYSICAL FITNESS & MENTAL STRENGTH

Call us to start your Martial Arts journey today!

503-674-7774 WWW.KIDSLOVETKD.COM






MT. HOOD
COMMUNITY COLLEGE

A New Career is Within Reach

All you have to do is take the first step

Beginning your academic journey with Mt. Hood Community College is easy and we are here with ample student support services to help you on your path to success.

- › **Six-month certificate programs**
- › **Two-year associate degrees**
- › **Quality instruction**



**Visit mhcc.edu
to learn more**

MHCC is an AA, EEO, Title IX, Title VI, Title VII, Title II, Section 504, ADA, ORS 659A Institution. People requiring accommodations due to a disability should contact the Accessibility Education Services office at 503-491-6923 or aes@mhcc.edu. Please call at least two weeks prior to the event.





SHOP OVER
40 OUTLETS
tax free!

ZALES
THE DIAMOND STORE®

carter's
babies and kids

Bath & Body Works®



PENDLETON®

EST. 1895
OSHKOSH
B'gosh®

VANS

Levi's®
OUTLET STORE



DRIVE THRU!

TOMMY HILFINGER

COLUMBIA GORGE
OUTLETS

Exit 17 off I-84 • Troutdale • OR 97060 • (503) 669-8060 • ShopColumbiaGorgeOutlets.com  